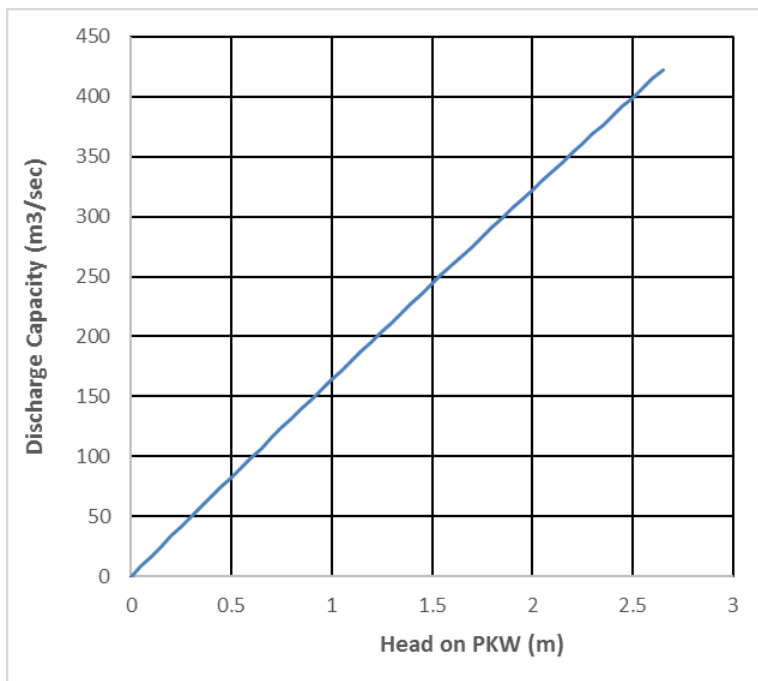


Dam's name:

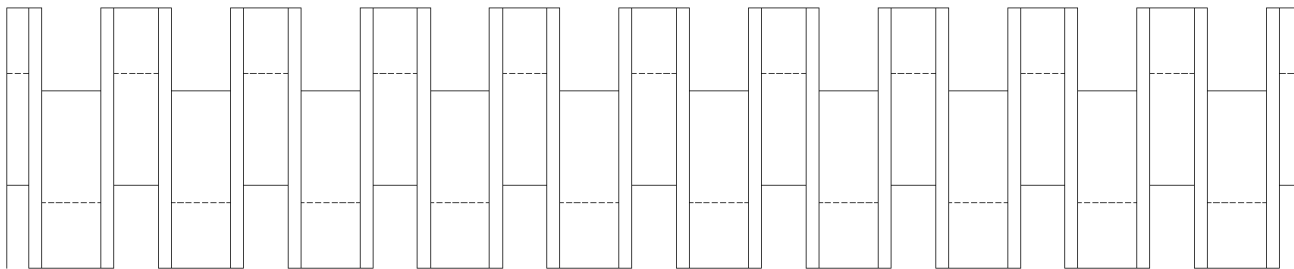
LOOMBAH

PKW's year of construction:

2013

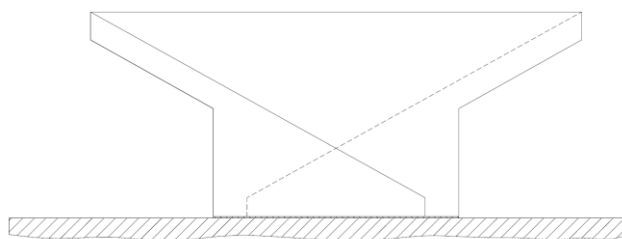


Country: Australia



Plan view of the PKW

<i>Progress of work :</i>	Built
<i>Dam's owner:</i>	North East Water
<i>Consultant:</i>	GHD Pty Ltd
<i>Contractor:</i>	Hazell Bros
<i>PKW location:</i>	On the right abutment of an earthfill dam with central concrete core wall
<i>Downstream energy dissipation type:</i>	Natural rock channel
<i>PKW purpose:</i>	Increase discharge capacity
<i>PKW discharge capacity at MWL (m3/s):</i>	416
<i>Dam design flow (m3/s):</i>	500
<i>Monitoring devices (Presence and type):</i>	No
<i>Aeration (type and diameter of the pipe):</i>	No
<i>Overflowing Frequency:</i>	Every year for 2-3 months
<i>Number of overflow known:</i>	1
<i>Maximum head on PKW experienced (m) and date:</i>	Less than 0.2m
<i>Type and number of other spillway:</i>	Nil
<i>Material of the PKW:</i>	Reinforced concrete
<i>B (m):</i>	6.00
<i>P (m):</i>	2.50
<i>W (m):</i>	30.0
<i>L (m):</i>	150.0
<i>Number of inlet:</i>	9



Cross-section view of the PKW

$W_i (m)$:	1.03	
Number of outlet:	10	
$W_o (m)$:	1.37	
$T_s (m)$:	0.30	
PKW cost (k€)	1,400	
Total project cost (k€)	1,800	